

**InCaMa BioTeCh.**

**P.O.BOX 201090-00100, NAIROBI**

**Phone: +254 786 432 944**

**Email: [incamabiotech@gmail.com](mailto:incamabiotech@gmail.com)**

**Website: [www.incamabiotech.co.ke](http://www.incamabiotech.co.ke)**



## About InCaMa BioTech.

**InCaMa BioTech** was established in 2019 as a distribution company specialized in life science supplies, we are dedicated to advancing and optimizing the laboratory. For the time we've been operational, we have been a trusted partner for laboratory professionals, helping to advance scientific research and patient care. We have a vital role: our focus being on innovation, reliability and efficiency which has led us to become the partner of choice for clinical, research and industrial customers around East and Central Africa region.

In the life sciences, researchers use InCaMa BioTech products to study complex biological problems, including causes of disease and potential new treatments. Our team of experts dedicates the time and energy to understand the complexity of research for laboratory customers in a wide variety of settings i.e universities, government, biotechnology and pharmaceutical companies, hospitals, and commercial laboratories. By innovating new processes and technologies, we're challenging conventional wisdom with our goal being to develop the best, most widely trusted laboratory solutions available on the market today.





**Vision:** To provide Advanced, Innovative, and Trusted Technologies by and be the regional partner of choice to the Scientific and Medical society as a supplier.

**Mission:** To provide our clients with up to date technologies through high quality and innovative laboratory products that add value to their research and diagnostic tools.

**Motto:** Advanced, Innovative, Trusted, Technologies.

**Core Values:**



## Why Choose InCaMa BioTech?

- We successfully install on request by our customers and offer user training services on the various equipment's that we sell.
- We guide the end users by providing user manuals to help our customers understand how the equipment's work and also take them through short courses that will improve their lab proficiency.
- We have got certification from various manufacturers to install all the equipment's that we sell and supply to our customers.

## **Our Competitive Advantages and Unique Capabilities:**

**Experienced Members of Staff:** All our Applications Staff, Biomedical Engineers, Managers and sales staff are scientists with knowledge of the region and vast experience having worked with global partners.

**Applications Support and Training:** We pride ourselves in having a large pool of in-house applications staff that are scientists with specialization in Biotechnology, Biochemistry, Microbiology, Chemistry, Medical Lab, Clinical Medicine, Public Health, Veterinary, Medicine, Botany, Zoology & Forensics with a minimum of bachelor's and Masters Degrees.

**Timely Technical Support:** We offer Technical, Support to all our customers, Installation of equipment's and training at no extra cost including other products that may require this service through our able applications and engineering team.

### **In house competent team of trained local Biomedical Engineers:**

Our team of Biomedical Engineers are well experienced and trained by various manufacturers to offer installation, Servicing and Maintenance of instruments with provision of the end user training to our clients.

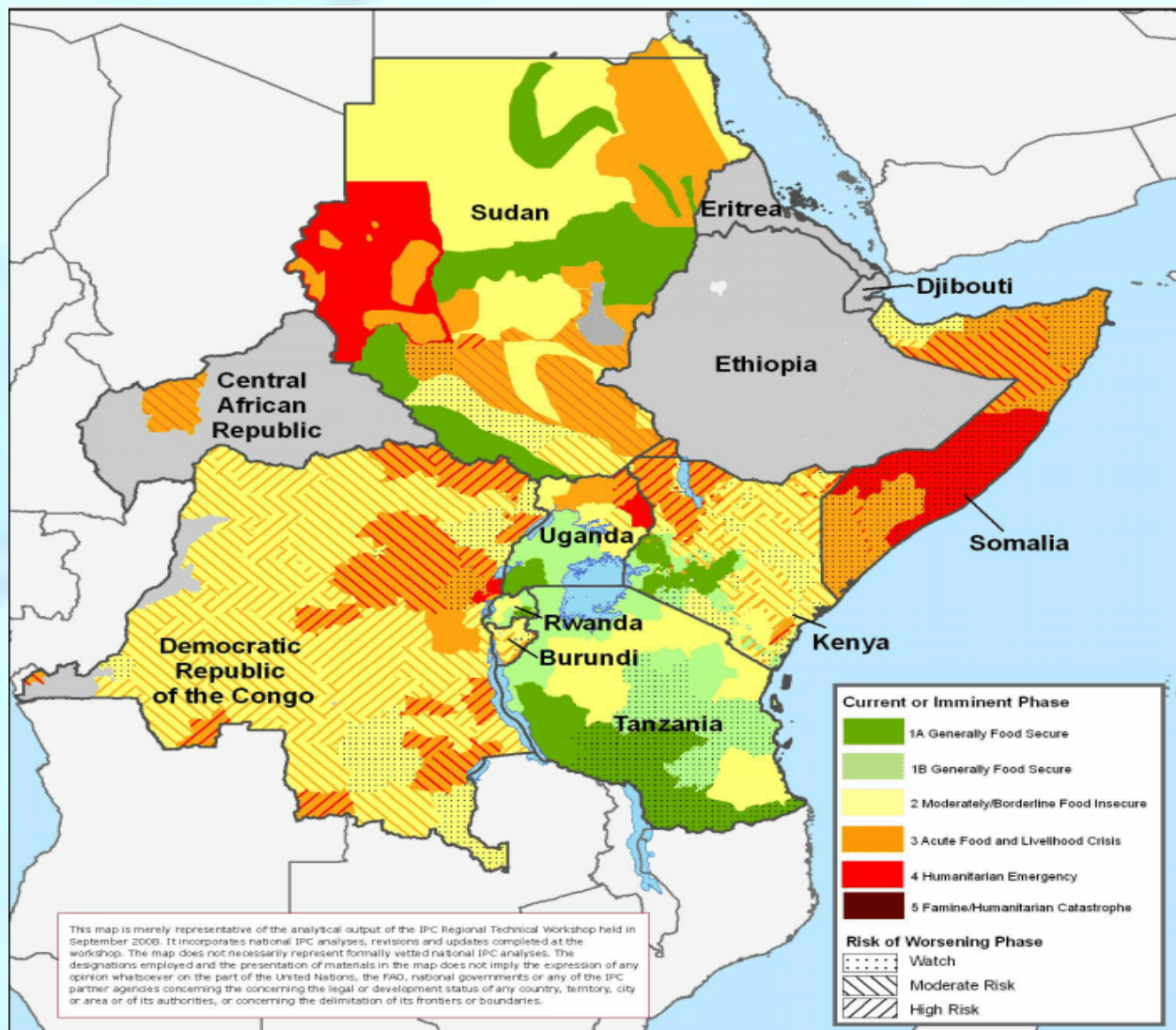
**Leading Brands Representation:** We supply products from most of the leading global brands and we ensure all items supplied by our company are CE and FDA approved.

**Delivery to your end user and channel simplicity:** We offer Channel simplicity and deliver all orders to the end user giving you peace of mind and value for money.

**Certifications and Licensing with relevant Authorities:** We have up to date relevant licenses in our countries of operation such as, Tax Compliance, Value Added Tax (V.A.T) amongst other statutory registrations (Documents available on request)

## Geographical Profile - Key Areas and Countries of Operation.

With the main Head Office in Nairobi Kenya, **InCaMa BioTech** has presence in East and Central African region in the following Countries: Kenya, Rwanda, Uganda and Tanzania, and we are currently in the process of expanding into other Eastern and Central African Countries. We believe in promoting locally grown talent in our areas of operation and therefore key sales, and management staff in our specific countries are drawn from the local population with guidance and technical assistance from the head office in Nairobi.





## PRODUCTS AND SERVICES

Our products and services include but not limited to:

1. **Laboratory Equipment:** Hematology and Chemistry Analyzers, Autoclaves, Centrifuge, Biosafety Cabinet, Vortex Mixers, Shakers, Air conditioners.
2. **General Laboratory Consumables:** Pipettes, Petri dishes, Gloves, Pipette Tips, Blood Collection Tubes, Falcon Tubes.
3. **Laboratory Reagents and Chemicals:** Acids, Bases and Buffers.
4. **Plastic ware and Consumables:** Pipette tips, PCR Plates/tubes, centrifuge tubes, Falcon tubes.
5. **Glassware:** Beakers, tubes, Flasks and stirrs
6. **Life Science products:** PCR machines, Primers, PCR kits and Reagents i.e Master Mix.
7. **General lab product:** Bottles and Beakers, Measuring cylinders and Reservoirs, Test tubes and Petri-dish, Flask and Container.



**InCaMa BioTeCh** believes in forming reliable working partnerships.

Some of our current partners include:

**SLS SCIENTIFIC:** UK's largest independent supplier of laboratory equipment, chemicals and consumables and stocks products from various companies namely: Sigma Aldrich, Becton Dickinson, Eppendorf, GE Healthcare, Whatman, Scilabware and Corning. Diagnostic and life science research products, laboratory chemicals, reagents and equipment's.

**Labtron Equipment Ltd:** Is a UK based company providing a comprehensive range of Laboratory Equipment's served in the field of Life Science, Food, Polymer, Pharmaceuticals, Chemical and Petrochemical Industries, also in Educational Institutes and Research Laboratories.

**Bioer Technology Co. Ltd. (BIOER);** Is a professional enterprise engaged in life science instruments and reagents development, product, sales and service.



**Bioer  
Technology**

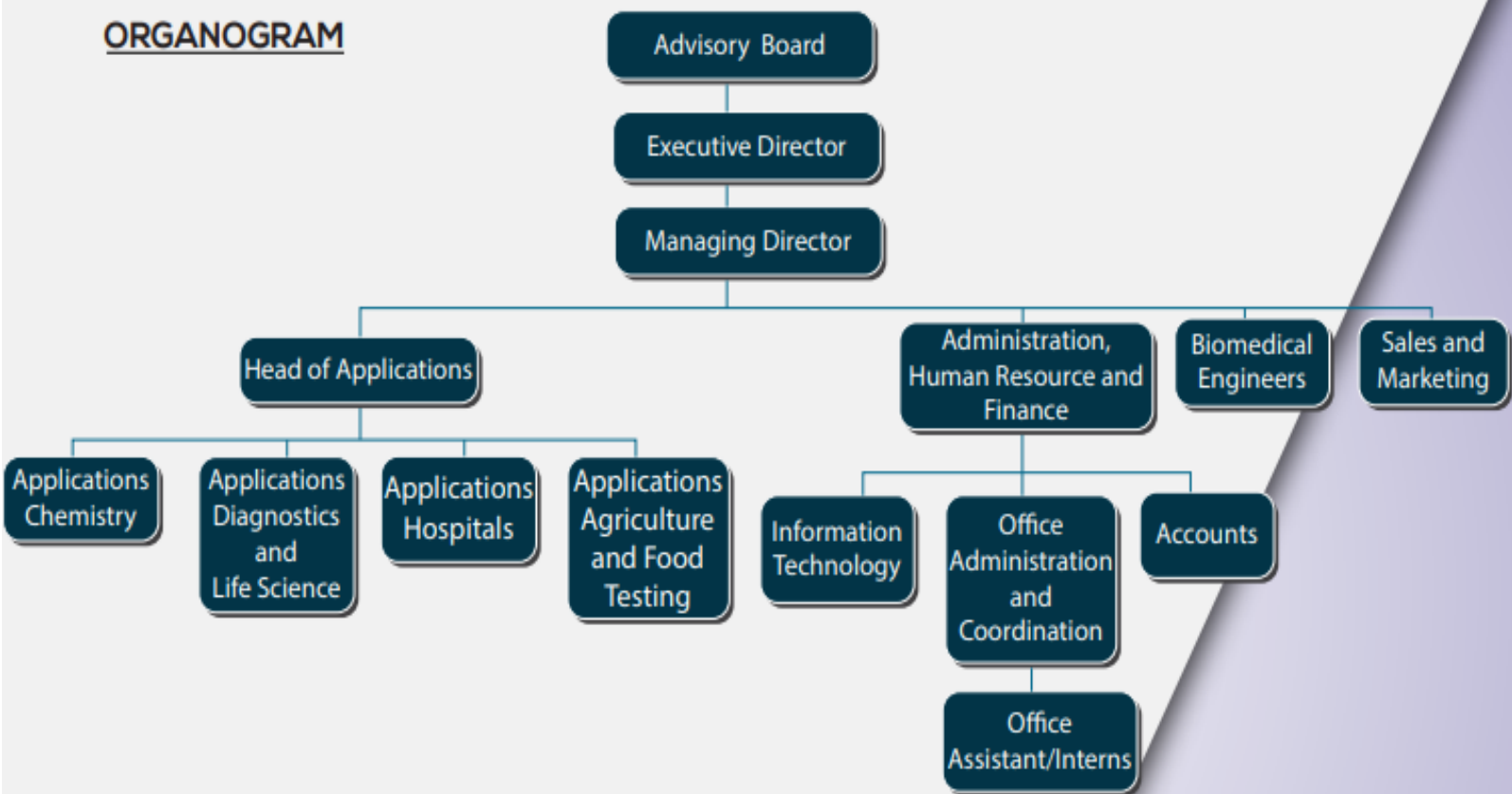


**SCIENTIFIC  
LABORATORY  
SUPPLIES**



**LABTRON**  
Equipment Limited

## ORGANOGRAM



**InCaMa biotech**  
Advanced + Innovative + Trusted + Technology

**InCaMa BioTeCh**

P.O.BOX 201090-00100, NAIROBI

Phone: +254 786 432 944

Email: [incamabiotech@gmail.com](mailto:incamabiotech@gmail.com)

Website: [www.incamabiotech.co.ke](http://www.incamabiotech.co.ke)

